

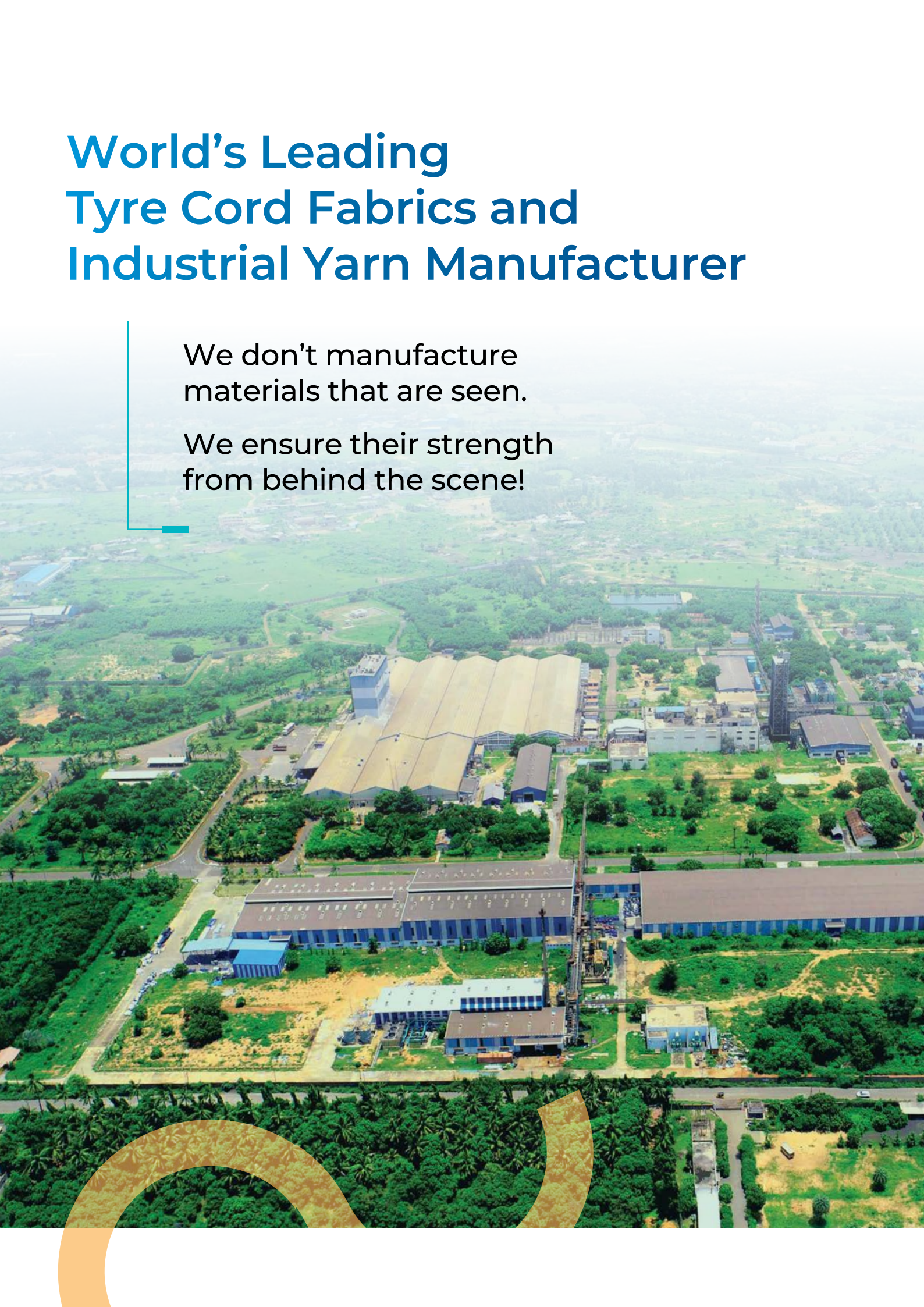


Tyre Cord Fabrics and Industrial Yarn

World's Leading Tyre Cord Fabrics and Industrial Yarn Manufacturer

We don't manufacture
materials that are seen.

We ensure their strength
from behind the scene!



SRF Limited

With a turnover of ₹14,870 crore (US\$ 1.8 billion), SRF Limited is a diversified chemicals conglomerate engaged in the manufacturing of industrial and specialty intermediates. The company's business portfolio covers Specialty Chemicals, Fluorochemicals, Packaging Films, Technical Textiles, Coated and Laminated Fabrics. Anchored by a strong workforce of 8,000+ employees from different nationalities working across thirteen manufacturing plants in India, one each in Thailand, South Africa, and Hungary, the company exports to 90+ countries.



Tyre Cord Fabrics (Nylon 6, Nylon 66, Polyester)

SRF is the largest manufacturer of Nylon 6 Tyre Cord Fabrics in India. SRF's product line up for Tyre Cord Fabrics constitutes the entire range of textile reinforcements such as Nylon Tyre Cord Fabrics (NTCF), Polyester Tyre Cord Fabrics (PTCF), Cycle Tyre Cord Fabrics and Chafer Fabrics including wicking and non-wicking chafer for heavy-duty tyres and tubeless radial tyres. These products are used as reinforcement material in various categories of tyres.

In 2004, SRF Tyre Cord Business was awarded the Deming Prize, becoming the first Tyre Cord company outside Japan to earn this unique honour. Today, SRF supplies Tyre Cord Fabrics to all major tyre companies in India.



Polyester Industrial Yarn

SRF commenced the commercial production of Polyester Industrial Yarn in May 2009 with a capacity of 20,500 Metric Tonnes Per Annum. Located in Gummidipoondi (Chennai, India), the manufacturing facility boasts of state-of-the-art technology installation from Toray Industries, Japan.

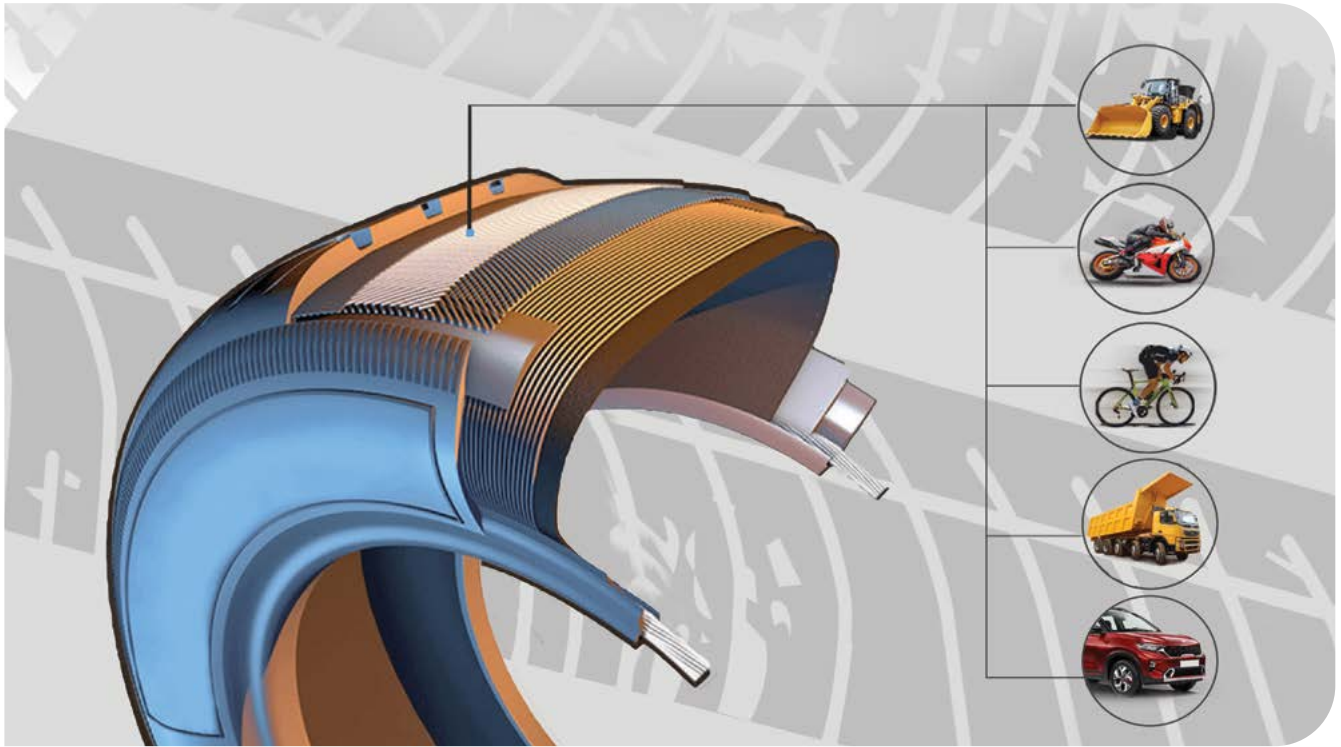
Our plant is capable of producing new generation family of Polyester Industrial Yarn including High Modulus Low Shrinkage Yarn (HMLS), High Tenacity Regular Yarn and Low Shrinkage Yarn. All these yarns are available in Adhesive Activated (AA) and Non-Adhesive Activated (NAA) form.



Nylon 6 Industrial Yarn

With over 50 years of experience, the Company enjoys an enviable reputation of being an ethical manufacturer of premium quality Nylon Industrial Yarn. SRF has the capability to provide material in small as well as big lots in the shortest period. As a leading manufacturer of Nylon 6 multifilament industrial yarn in India, SRF provides standard and tailor-made high tenacity multi-filament yarn of different deniers (630D - 2520D) specified by customers for a wide range of applications.

SRF offers a wide range of Tyre Cord Fabrics to meet specific requirements of customers for diverse applications.



SRF Tyre Cord Fabric Manufacturing Process

We don't make tyres.
We make them run longer.



Spinning



Twisting



Weaving



Dipping

Nylon Industrial Yarn Specifications

All assortments are available with additional functionalities of UV resistance and dope dyeing

Denier/ Construction	Denier @4.5% MR	Break Load (kg)	Elongation @ Break (%)	PLE* (%)	Tenacity (gpd) min	Hot Air Shrinkage (%)	Entanglement Knots/m
630D / 136 Fil.	640±10	≥8	25.0±3.0	12.0±0.7	≥9.0	7.0±2.0	4±2
840D / 136 Fil.	865±10	≥8	25.0±3.0	12.0±0.7	≥9.0	7.0±2.0	4±2
1260D / 204 Fil.	1280±10	≥12	25.0±3.0	12.0±0.7	≥9.0	7.0±2.0	4±2
1680D / 272 Fil.	1710±10	≥16	25.0±3.0	12.0±0.7	≥9.0	7.0±2.0	4±2
1890D / 306 Fil.	1920±10	≥18	25.0±3.0	12.0±0.7	≥9.0	7.0±2.0	4±2
2520D / 408 Fil.	2550±10	≥23	25.0±3.0	12.0±0.7	≥9.0	7.0±2.0	4±2

HAS CONDITIONS: 160 °C / 5 minutes / 0.01 gpd pre-tension

*PLE for 840D is at 4.5kg

*PLE for 1260D is at 6.8kg

*PLE for 2520D is at 13.6kg

*PLE for 1680D is at 9.0kg

*PLE for 1890D is at 10.1kg

Nylon Industrial Yarn Applications



Fishnet



Ropes and Cordage



Hoses



Narrow Woven Belts

Tyre Cord Fabric Specifications

Typical properties of Dipped Tyre Cord Fabric

N6 Dipped Fabric Properties

Denier	Ply	EPI Range	Width Range (Inch)	Breaking Strength (Kg)	EBR (%)
840	1	14-30	36'-58'	≥8.0	20±3
840	2	14-30	36'-58'	≥15.0	26±3
1260	2	18-30	36'-58'	≥22.5	24±3
1260	3	20-24	36'-58'	≥33.0	24±3
1680	2	20-30	36'-58'	≥29.5	25±3
1890	2	20-30	36'-58'	≥34.0	25±3
2835	2	18-25	36'-58'	≥52.9	24±3

N66 Dipped Fabric Properties

Denier	Ply	EPI Range	Width Range (Inch)	Breaking Strength (Kg)	EBR (%)
840	2	14~30	36'-58'	≥15.5	22±3
1260	1	18~30	36'-58'	≥12.0	20±3
1260	2	18~30	36'-58'	≥22.5	21±3
1260	3	20~25	36'-58'	≥33.0	23±3
1680	2	18~30	36'-58'	≥30.0	25±3
1890	2	18~30	36'-58'	≥34.0	25±3

Polyester Dipped Fabric Properties

Denier	Ply	EPI Range	Width Range (Inch)	Breaking Strength (Kg)	EBR (%)
1000	2	20~28	42'-58'	≥15.0	16±2
1300	2	20~28	42'-58'	≥19.5	17±2
1500	2	20~28	42'-58'	≥22.5	16±2
2000	2	20~28	42'-58'	≥28.0	16±2

EASL (%)	Shrinkage (%)	H Adhesion (Kg)	Cord Gauge (mm)	Cable Twist Greige (TPM)	Ply Twist Greige (TPM)
13±1.5	4.5±1.5	≥6.5	0.36±0.04	-	240±15
10±1.5	4.5±1.5	≥12	0.55±0.04	470±20	470±20
9.5±1.5	5.5±1.5	≥15	0.65±0.04	390±20	390±20
9.5±1.5	5.5±1.5	≥17	0.80±0.04	300±20	300±20
9.5±1.5	5±1.5	≥17	0.75±0.04	335±15	335±15
10±1.5	5±1.5	≥18	0.79±0.04	315±15	315±15
10±1.5	5±1.5	≥18	0.99±0.04	255±15	255±15

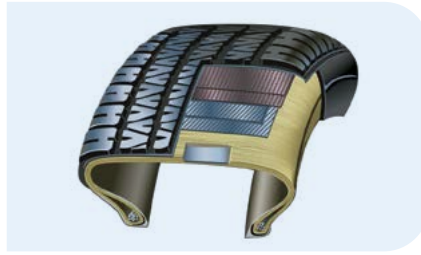
EASL (%)	Shrinkage (%)	H Adhesion (Kg)	Cord Gauge (mm)	Cable Twist Greige (TPM)	Ply Twist Greige (TPM)
9±1.5	4.5±1.5	≥12	0.55±0.04	240±15	240±15
9±1.5	4.0±1.5	≥8	0.40±0.04	470±20	470±20
9.5±1.5	4.5±1.5	≥15	0.65±0.04	390±20	390±20
10±1.5	4.0±1.5	≥17	0.79±0.04	300±20	300±20
11±1.5	3.5±1.5	≥17	0.76±0.04	335±15	335±15
10±1.5	5.0±1.5	≥18	0.79±0.04	315±15	315±15

EASL (%)	Shrinkage (%)	H Adhesion (Kg)	Cord Gauge (mm)	Cable Twist Greige (TPM)	Ply Twist Greige (TPM)
4.5±1	2±0.5	≥10	0.55±0.04	470±20	470±20
4.5±1	2±0.5	≥12	0.62±0.04	370±20	370±20
4.5±1	2±0.5	≥14	0.66±0.04	390±20	390±20
4.5±1	2±0.5	≥16	0.73±0.04	335±20	335±20

Polyester Industrial Yarn Applications



Coated Fabrics (Awnings)



Tyre Cord Fabrics



Polyester Ropes



Car Seat Belts



Polyester Geo Strips



Polyester Slings



Polyester Geogrids



Polyester Hose Pipes



Conveyor Belts

Polyester Industrial Yarn - Speciality Products

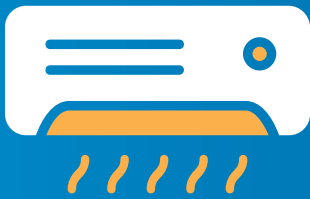
Yarn Type	Product	Nominal Fineness (titre/ filaments)	Average Value of Fineness	Average Value of Breaking Strength	Average Value of Tenacity	Average Value of Breaking Elongation	Average Value of Elongation at 4.0 cN/dtex or 4.53 g/d load	Testrite Shrinkage - (177 °C/ 2 Min/ 0.05 gpd)
	Unit -->	dtex/f	dtex	N	cN/dtex	%	%	%
Regular High Tenacity - NAA	2880 RNA	2880/384	2880 ± 50	> 230	> 8.0	14.0 ± 3.0	6.0 ± 1.5	< 12.0
Regular High Tenacity - NAA	2880 RNH	2880/360	2880 ± 50	> 230	> 8.0	14.0 ± 3.0	6.0 ± 1.5	< 12.0
Regular Low Shrinkage - NAA	2880 RLS	2880/384	2880 ± 50	> 201	> 7.0	23.0 ± 3.0	12.0 ± 2.0	< 3.5
Geogrid Low Elongation Yarn	1670 RLE	1500/192	1685 ± 30	≥ 133.4	≥ 8.0	10.0 ± 2.0	4.8 ± 1.0	< 12.0
High Tenacity - NAA	933 RNA	933/192	933 ± 22	> 75.0	> 8.2	13.0 ± 3.0	6.0 ± 1.5	< 12.0
Ultra-Low Shrinkage Yarn - NAA	933 ULS	933/180	933 ± 22	> 65.0	> 7.0	26.0 ± 3.0	15.5 ± 1.5	< 3.0
Regular Low Shrinkage Yarn - AA	1100 RLS-AA	1100/192	1111 ± 20	> 76.8	> 7.0	23.0 ± 3.0	11.5 ± 1.5	< 3.5
Super High Tenacity - NAA	1100 SHT-NAA	1100/192	1140 ± 28	> 96.1	> 8.4	12.0 ± 2.0	5.0 ± 1.5	< 12.0
Super High Tenacity - AA	1100 SHT-AA	1100/192	1140 ± 28	> 96.1	> 8.4	12.0 ± 2.0	5.0 ± 1.5	< 12.0
Super High Tenacity - AA	1440 SHT-AA	1440/192	1440 ± 30	> 115.0	> 8.0	15.0 ± 3.0	6.5 ± 1.5	< 8.0
Ultra-Low Shrinkage Yarn - AA	1100 ULS-AA	1100/192	1111 ± 20	> 76.0	> 6.8	27.0 ± 3.0	15.5 ± 1.5	< 1.0
	1440 ULS-AA	1440/192	1440 ± 25	> 98.0	> 6.8	28.0 ± 3.0	16.5 ± 1.5	< 1.0
	1670 ULS-AA	1670/192	1670 ± 30	> 114.0	> 6.8	27.0 ± 3.0	15.5 ± 1.5	< 1.0
	2200 ULS-AA	2200/384	2222 ± 40	> 150.0	> 6.8	27.0 ± 3.0	15.5 ± 1.5	< 1.0
High Tenacity Low Shrinkage - NAA	3340 ULS-AA	3340/384	3340 ± 60	> 225.0	> 6.8	27.0 ± 3.0	15.5 ± 1.5	< 1.0
High Tenacity Low Shrinkage - NAA	1100 HT-LS	1100/192	1111 ± 20	> 78.5	> 7.0	23.0 ± 3.0	12.5 ± 1.5	< 1.5

Polyester Industrial Yarn Specifications

Yarn Type	Product	Nominal Fineness (Titre/ Filaments)	Average Value of Fineness	Average Value of Breaking Strength	Average Value of Tenacity	Average Value of Breaking Elongation	Average Value of Elongation at 4.0 cN/dtex or 4.53 g/d load	Hot air Shrinkage - 177 °C/2 Min/ 0.05 gpd	Hot Air Shrinkage - 190 °C/5 min/0.01 gpd
	Unit -->	dtex/f	dtex	N	cN/dtex	%	%	%	%
Low Shrinkage Yarn (LS)	1100 RLS	1100/192	1111 ± 20	≥ 76.8	≥ 7.0	23.0 ± 3.0	12.0 ± 2.0	≤ 3.5	≤ 5.5
	1100 RLS-H	1100/180	1111 ± 20	≥ 76.8	≥ 7.0	23.0 ± 3.0	12.0 ± 2.0	≤ 3.5	≤ 5.5
	1440 RLS	1440/192	1440 ± 25	≥ 99.7	≥ 7.0	23.0 ± 3.0	12.0 ± 2.0	≤ 3.5	≤ 5.5
	1670 RLS	1670/192	1670 ± 30	≥ 115.5	≥ 7.0	23.0 ± 3.0	12.0 ± 2.0	≤ 3.5	≤ 5.5
	2200 RLS	2200/384	2222 ± 40	≥ 153.6	≥ 7.0	23.0 ± 3.0	12.0 ± 2.0	≤ 3.5	≤ 5.5
Super Low Shrinkage Yarn (SLS)	1100 SLS	1100/192	1111 ± 20	≥ 76.8	≥ 7.0	26.0 ± 3.0	15.0 ± 2.0	≤ 2.0	≤ 4.0
	1100 SLS-H	1100/180	1111 ± 20	≥ 76.8	≥ 7.0	26.0 ± 3.0	15.0 ± 2.0	≤ 2.0	≤ 4.0
	1670 SLS	1670/192	1670 ± 30	≥ 115.5	≥ 7.0	26.0 ± 3.0	15.0 ± 2.0	≤ 2.0	≤ 4.0
	2200 SLS	2200/384	2222 ± 40	≥ 153.6	≥ 7.0	26.0 ± 3.0	15.0 ± 2.0	≤ 2.0	≤ 4.0
	2200 SLS-H	2200/360	2222 ± 40	≥ 153.6	≥ 7.0	26.0 ± 3.0	15.0 ± 2.0	≤ 2.0	≤ 4.0
Ultra Low Shrinkage Yarn (ULS)	1100 ULS	1100/192	1111 ± 20	≥ 76.0	≥ 6.8	28.0 ± 3.0	16.5 ± 1.5	≤ 1.5	≤ 3.0
	1440 ULS	1440/192	1440 ± 25	≥ 98.0	≥ 6.8	28.0 ± 3.0	16.5 ± 1.5	≤ 1.5	≤ 3.0
	1670 ULS	1670/192	1670 ± 30	≥ 114.0	≥ 6.8	28.0 ± 3.0	16.5 ± 1.5	≤ 1.5	≤ 3.0
	2200 ULS	2200/384	2222 ± 40	≥ 150.0	≥ 6.8	28.0 ± 3.0	16.5 ± 1.5	≤ 1.5	≤ 3.0
	3340 ULS	3340/384	3340 ± 60	≥ 225.0	≥ 6.8	28.0 ± 3.0	16.5 ± 1.5	≤ 1.5	≤ 3.0
Reg AA Yarn	1100 RAA	1100/192	1111 ± 20	≥ 83.4	≥ 7.6	16.5 ± 3.0	6.4 ± 1.5	≤ 8.0	-
	1100 RAH	1100/180	1111 ± 20	≥ 83.4	≥ 7.6	16.5 ± 3.0	5.0 ± 1.5	≤ 8.0	-
	1100 RAI	1100/192	1111 ± 20	≥ 83.4	≥ 7.6	16.5 ± 3.0	5.0 ± 1.5	≤ 8.0	-
	1440 RAA	1440/192	1440 ± 25	≥ 100	≥ 7.6	16.5 ± 3.0	6.4 ± 1.5	≤ 8.0	-
	1670 RAA	1670/192	1670 ± 30	≥ 125.4	≥ 7.6	16.5 ± 3.0	6.4 ± 1.5	≤ 8.0	-
	2200 RAA	2200/384	2222 ± 40	≥ 166.0	≥ 7.6	16.5 ± 3.0	6.5 ± 1.5	≤ 8.0	-
	2200 RAH	2200/360	2222 ± 40	≥ 166.0	≥ 7.6	16.5 ± 3.0	6.5 ± 1.5	≤ 8.0	-
	2200 RAI	2200/384	2222 ± 40	≥ 166.0	≥ 7.6	16.5 ± 3.0	6.5 ± 1.5	≤ 8.0	-
	3340 RAA	3340/384	3360 ± 60	≥ 250.8	≥ 7.6	16.5 ± 3.0	6.4 ± 1.5	≤ 8.0	-
HT Reg NAA Yarn	1100 RNA	1100/192	1111 ± 20	≥ 88.9	≥ 8.1	13.0 ± 3.0	5.0 ± 1.5	≤ 11.0	-
	1100 RNH	1100/180	1111 ± 20	≥ 88.9	≥ 8.1	13.0 ± 3.0	5.0 ± 1.5	≤ 11.0	-
	1220 RNA	1220/192	1222 ± 20	≥ 97.8	≥ 8.0	13.0 ± 3.0	5.0 ± 1.5	≤ 11.0	-
	1440 RNA	1440/192	1440 ± 25	≥ 110	≥ 8.1	13.0 ± 3.0	5.0 ± 1.5	≤ 11.0	-
	1440 RNH	1440/180	1440 ± 25	≥ 110	≥ 8.1	13.0 ± 3.0	5.0 ± 1.5	≤ 11.0	-
	1670 RNA	1670/192	1670 ± 30	≥ 133.6	≥ 8.1	13.0 ± 3.0	5.0 ± 1.5	≤ 11.0	-
	2200 RNA	2200/384	2222 ± 40	≥ 176	≥ 8.1	13.0 ± 3.0	5.0 ± 1.5	≤ 11.0	-
	2200 RNH	2200/360	2222 ± 40	≥ 176	≥ 8.1	13.0 ± 3.0	5.0 ± 1.5	≤ 11.0	-
	3340 RNA	3340/384	3345 ± 60	≥ 265	≥ 8.1	13.0 ± 3.0	5.5 ± 1.5	≤ 11.0	-
HMLS AA Yarn	1100 HAA	1100/240	1111 ± 20	≥ 73.5	≥ 6.7	13.5 ± 2.0	5.5 ± 1.0	≤ 4.5	-
	1440 HAA	1440/360	1480 ± 25	≥ 95.0	≥ 6.7	13.5 ± 2.0	5.5 ± 1.0	≤ 4.5	-
	1670 HAA	1670/360	1670 ± 30	≥ 110	≥ 6.7	13.5 ± 2.0	5.5 ± 1.0	≤ 4.5	-
	2200 HAA	2200/480	2222 ± 40	≥ 142	≥ 6.7	13.5 ± 2.0	5.5 ± 1.0	≤ 4.5	-
HMLS NAA Yarn	1100 HNA	1100/240	1140 ± 20	≥ 77.5	≥ 6.8	13.5 ± 2.0	6.0 ± 1.0	≤ 4.5	-
	1100 HT-HNA	1100/240	1140 ± 20	≥ 80.0	≥ 7.3	13.5 ± 2.0	6.0 ± 1.0	≤ 4.5	-
	1440 HNA	1440/360	1480 ± 30	≥ 100.0	≥ 6.8	13.5 ± 2.0	6.0 ± 1.0	≤ 4.5	-
	1670 HNA	1670/360	1730 ± 30	≥ 117.0	≥ 6.8	13.5 ± 2.0	6.0 ± 1.0	≤ 4.5	-
	1670 HT-HNA	1670/360	1730 ± 30	≥ 125.0	≥ 7.3	13.5 ± 2.0	6.0 ± 1.0	≤ 4.5	-
	1670 HNA (Low DSI)	1670/360	1670 ± 30	≥ 117.0	≥ 6.8	13.5 ± 2.0	6.0 ± 1.0	≤ 4.5	-
Geograde Yarn	2200 HNA	2200/480	2222 ± 40	≥ 146	≥ 6.8	13.5 ± 2.0	6.0 ± 1.0	≤ 4.5	-
	1100 RNG	1100/192	1120 ± 20	≥ 88.2	≥ 8.0	12.0 ± 2.0	5.0 ± 1.0	8.0±2.0	-
	1100 RNG-H	1100/180	1120 ± 20	≥ 88.2	≥ 8.0	12.0 ± 2.0	5.0 ± 1.0	8.0±2.0	-
	1670 RNG	1670/192	1685 ± 30	≥ 133.1	≥ 8.0	12.0 ± 2.0	5.0 ± 1.0	8.0±2.0	-
	2200 RNG	2200/384	2240 ± 40	≥ 176.4	≥ 8.0	12.0 ± 2.0	5.0 ± 1.0	8.0±2.0	-
	2200 RNG-H	2200/360	2240 ± 40	≥ 176.4	≥ 8.0	12.0 ± 2.0	5.0 ± 1.0	8.0±2.0	-
HT Non AA (Seat Belt Application)	3340 RNG	3340/384	3370 ± 60	≥ 264.6	≥ 8.0	12.0 ± 2.0	5.0 ± 1.0	8.0±2.0	-
	1100/96	1100/96	1120 ± 20	≥ 85.0	≥ 7.5	14.0 ± 2.0	5.5 ± 1.0	≤ 11.0	14.0 ± 2.0 at 190/15min/9gms
	1670/108	1670/108	1690 ± 30	≥ 125	≥ 7.5	14.0 ± 2.0	5.5 ± 1.0	≤ 11.0	14.0 ± 2.0 at 190/15min/9gms
Higher Elongation	1670/144	1670/144	1690 ± 30	≥ 125	≥ 7.5	14.0 ± 2.0	5.5 ± 1.0	≤ 11.0	14.0 ± 2.0 at 190/15min/9gms
	1100 EH	1100/180	1111 ± 20	≥ 84	≥ 7.6	16.0 ± 3.0	6.5 ± 1.5	≤ 6.0	-
	1440 EH	1440/180	1440 ± 25	≥ 110	≥ 7.6	16.0 ± 3.0	6.5 ± 1.5	≤ 6.0	-
	2200 EH	2200/360	2222 ± 40	≥ 168	≥ 7.6	16.0 ± 3.0	6.5 ± 1.5	≤ 6.0	-

SRF

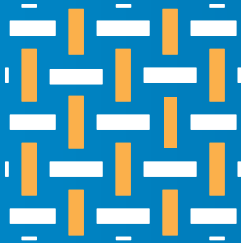
At a Glance



Fluorochemicals



Specialty
Chemicals



Technical
Textiles



Packaging
Films



16

Manufacturing
Facilities



₹ 14,870 cr

Turnover
(US\$ 1.8 billion)
in FY23



8,000+

Global
Workforce



Equipped with
State-of-the-Art
R&D facilities,
SRF has filed

430

Patents to-date



Exporting to

90+

Countries



A winner of the
prestigious

**Deming
Prize**

for Tyre Cord
Business in 2004
and Chemicals
Business in 2012



Marketing Office

SRF Limited

Block - C, Sector - 45,
Gurugram, Haryana, India - 122 003
Tel: +91 - 124 - 4354400
E-mail: info@srf.com
www.srf.com

Plants

Plot No. K1, SIPCOT Industrial Complex
Gummidipoondi, Thiruvallur District,
Tamil Nadu, India - 601 201
Tel: +91 - 44 - 27923212 - 22

Manali Industrial Area,
Manali, Chennai,
Tamil Nadu, India - 600 068



For any queries please contact:

Ankur Sharma
Mob: +91 - 9600025088
Email: ankur.sharma@srf.com

Nitish Sharma
Mob: +91 - 7397499777
Email: nitish.sharma@srf.com

Mohan Krishna Napa
Mob: +91 - 9717003713
Email: mohankrishna.napa@srf.com



Scan the QR code to download